



## LEAD MEMBER FOR COMMUNITIES AND SAFETY

**DECISIONS** to be made by the Lead Member for Communities and Safety,  
Councillor Bill Bentley

**THURSDAY, 30 MAY 2019 AT 2.00 PM**

**COMMITTEE ROOM - COUNTY HALL, LEWES**

### **AGENDA**

- 1 Decisions made by the Lead Cabinet Member on 25 April 2019 (*Pages 3 - 4*)
- 2 Disclosure of Interests  
Disclosure by all Members present of personal interests in matters on the agenda, the nature of any interest and whether the Members regard the interest as prejudicial under the terms of the Code of Conduct.
- 3 Urgent items  
Notification of any items which the Lead Member considers urgent and proposes to take at the appropriate part of the agenda.
- 4 Petition for Improvements to signalised junction of Victoria Drive, Summerdown Road, East Dean Road and Church Street, Eastbourne (*Pages 5 - 8*)  
Report by the Director of Communities, Economy and Transport
- 5 Request for traffic calming – Gore Park Road, Eastbourne (*Pages 9 - 12*)  
Report by the Director of Communities, Economy and Transport
- 6 Any urgent items previously notified under agenda item 3

PHILIP BAKER  
Assistant Chief Executive  
County Hall, St Anne's Crescent  
LEWES BN7 1UE

22 May 2019

Contact Simon Bailey, Democratic Services Officer,  
01273 481935  
Email: [simon.bailey@eastsussex.gov.uk](mailto:simon.bailey@eastsussex.gov.uk)

This page is intentionally left blank

## LEAD MEMBER FOR COMMUNITIES AND SAFETY

DECISIONS made by the Lead Member for Communities and Safety, Councillor Bill Bentley, on 25 April 2019 at County Hall, Lewes

---

### 24 DECISIONS MADE BY THE LEAD CABINET MEMBER ON 31 JANUARY 2019

24.1 The Lead Member confirmed as a correct record the minutes of the meeting held on 31 January 2019.

### 25 REPORTS

25.1 Reports referred to in the minutes below are contained in the minute book.

### 26 EUROPEAN SETTLEMENT SERVICE (EUSS)

26.1 The Lead Member considered a report by the Director of Communities, Economy and Transport.

#### DECISION

26.2 The Lead Member RESOLVED (1) to note the introduction of the EUSS service from 2 May 2019; and

(2) to approve the introduction of a £14 fee for the provision of the EUSS service for non-East Sussex based customers from 2 May 2019.

#### Reasons

26.3 In order to provide an additional way that affected citizens can apply to the EUSS and to assist with cost recovery.

### 27 SOUTHOVER GRANGE - CHANGES TO SERVICES AND PACKAGES

27.1 The Lead Member considered a report by the Director of Communities, Economy and Transport.

#### DECISION

27.2 The Lead Member RESOLVED (1) to approve the new open drinks list format and retail price mark-up for ceremony packages, via a 'per head' fee structure at Southover Grange;

(2) To approve the new package fees which no longer include the drinks element within them;

(3) To approve the proposed change to the supply and customer booking process of the Gold Package canapés/buffet food provision;

(4) To approve the introduction of wedding hire services and associated fees;

(5) To approve the introduction of a room hire charge for extended access to Southover Grange; and

(6) To approve the trial of a discount for winter ceremonies packages at Southover Grange.

## Reasons

27.3 The proposed changes to the current non-statutory ceremony packages on offer at Southover Grange, and the introduction of additional services, will maintain and enhance the Service's offering for customers, allowing them more flexibility in their choices and improving further the opportunity to upsell ceremony-only bookings to include an enhancement.

**Report to:** Lead Cabinet Member for Communities and Safety  
**Date of meeting:** 30 May 2019  
**By:** Director of Communities, Economy and Transport  
**Title:** Petition for improvements to the signalised junction at Victoria Drive, Summerdown Road, East Dean Road and Church Street in Eastbourne  
**Purpose:** To consider the request for improvements to be made to the above signalised junction, with particular focus on improvements for pedestrians and cyclists

---

**RECOMMENDATIONS:** The Lead Member is recommended to advise the petitioners that:

- (1) Potential improvements for pedestrians and cyclists at this junction, such as providing pedestrian phases at the signals, has been assessed through our approved High Level Sift process; and
  - (2) The proposal was assessed further as part of the Detailed Assessment stage, however it did not rank highly enough to be included within the 2019/2020 Capital Programme
- 

## 1 Background Information

1.1. At the County Council meeting on 5 February 2019 Councillor Ungar presented a petition to the Chairman from a group of residents and interested parties of the Victoria Drive area of Eastbourne. The group believe that the traffic situation at the signalised junction of Victoria Drive, Summerdown Road, East Dean Road and Church Street requires urgent review with a view to:

- *Improve the signalised junction for vulnerable road users such as pedestrians and cyclists*

1.2. A copy of the petition is available in the Members' Room. Standing Orders provide that where the Chairman considers it appropriate petitions are considered by the relevant Committee. The Chairman has referred this petition to the Lead Member for Communities and Safety.

## 2 Supporting Information

2.1. Victoria Drive, Summerdown Road, East Dean Road and Church Street are covered by a 30mph speed limit as indicated by the system of street lighting in these roads. Properties fronting these roads are a mix of residential and commercial. East Dean Road and Church Street are classified as being part of the A259. Victoria Drive is classified as the C695 with Summerdown Road being unclassified. The junction therefore has a mix of all classes of vehicle using it.

2.2. The current traffic signals do not have a specific pedestrian phase, although there are dropped kerbs at the traffic signals to allow pedestrians and other vulnerable road users to cross.

2.3. Each year the Road Safety Team identifies sites that have the most crashes that result in injury as part of their Local Safety Scheme (LSS) programme. The causes of the crashes are then studied to see how we can reduce the number of casualties on the roads in East Sussex.

2.4. LSS sites are identified where there have been four or more crashes in a three year period. Priority is given to improving sites which have the highest number of crashes with the reduction of fatal and serious casualties taking precedence. A location map of the crashes relative to this junction can be found at Appendix 1.

2.5. This location has been identified and studied as part of the LSS programme previously, with a number of measures considered. As part of the 2017 LSS programme, amendments were made to the existing directional signs on the approaches to the junction to ensure drivers were

fully aware of the road layout. In addition to this all of the road markings in the area were renewed.

2.6. The available crash record for this junction between 1 March 2016 and 28 February 2019 shows that there have been a total of five crashes resulting in personal injury. None of these crashes involved a pedestrian. One involved a cyclist and was attributed to loss of control/brake failure and resulted in minor injury.

2.7. Improvements to the traffic signals at this junction to include dedicated facilities for pedestrians and cyclists would be outside the scope of the funding available for LSS Schemes and would need to be funded through the Capital Programme.

2.8. The County Council has a limited amount of funding to develop local transport improvements and we need to ensure that we target our resources to those schemes which will be of greatest benefit to our local communities. To help us prioritise the numerous requests received for improvements, we developed a process to determine which schemes should be considered for funding through our Capital Programme for Transport Improvements. The request for amendments to be made to the traffic signals to include a pedestrian phase was assessed to determine if it might be a priority for further consideration. The proposal met the benchmark score and was put forward for detailed assessment.

2.9. The detailed appraisal was carried out in late 2018 and was ranked 38 out of 76 appraisals assessed. We have sufficient funds available to consider the first 21 schemes on the detailed appraisal assessment list which forms the Capital Programme for Transport Improvements 2019/20. This programme was approved by the Lead Member for Transport and Environment at his decision-making meeting held on 18 March 2019. As a result of the detailed appraisal, the scheme was not put forward for inclusion into the capital programme for 2019/20. The request will continue to be retained on record for possible inclusion in a future programme. A scheme could also secure entry in the event that external funding becomes available, for example from funding raised by the local community.

### **3 Conclusion and Reasons for Recommendations**

3.1. It is recommended that the Lead Member for Communities and Safety agrees that the inclusion of a pedestrian phase at these traffic signals is not presently a priority for funding from the County Council's budget. However, appropriate improvements could be considered should an alternative source of income become available or if an application through Community Match was successful.

3.2. In order to determine what measures could be suitable at this signalised junction prior to a Community Match application, it is suggested that the residents contact the Borough Council to ascertain whether they would be interested in supporting a scheme to try and influence traffic conditions in this road. They would then need to commission a Feasibility Study at a cost of £500. This will help to identify possible improvements for further discussions and provide the group of residents and Borough Council with an estimate of what they might cost to assist in their budget considerations.

**RUPERT CLUBB**

Director of Communities, Economy and Transport

Contact Officer: Victoria Bartholomew

Tel. No. 01424 724284

Email: Victoria.Bartholomew@eastsussex.gov.uk

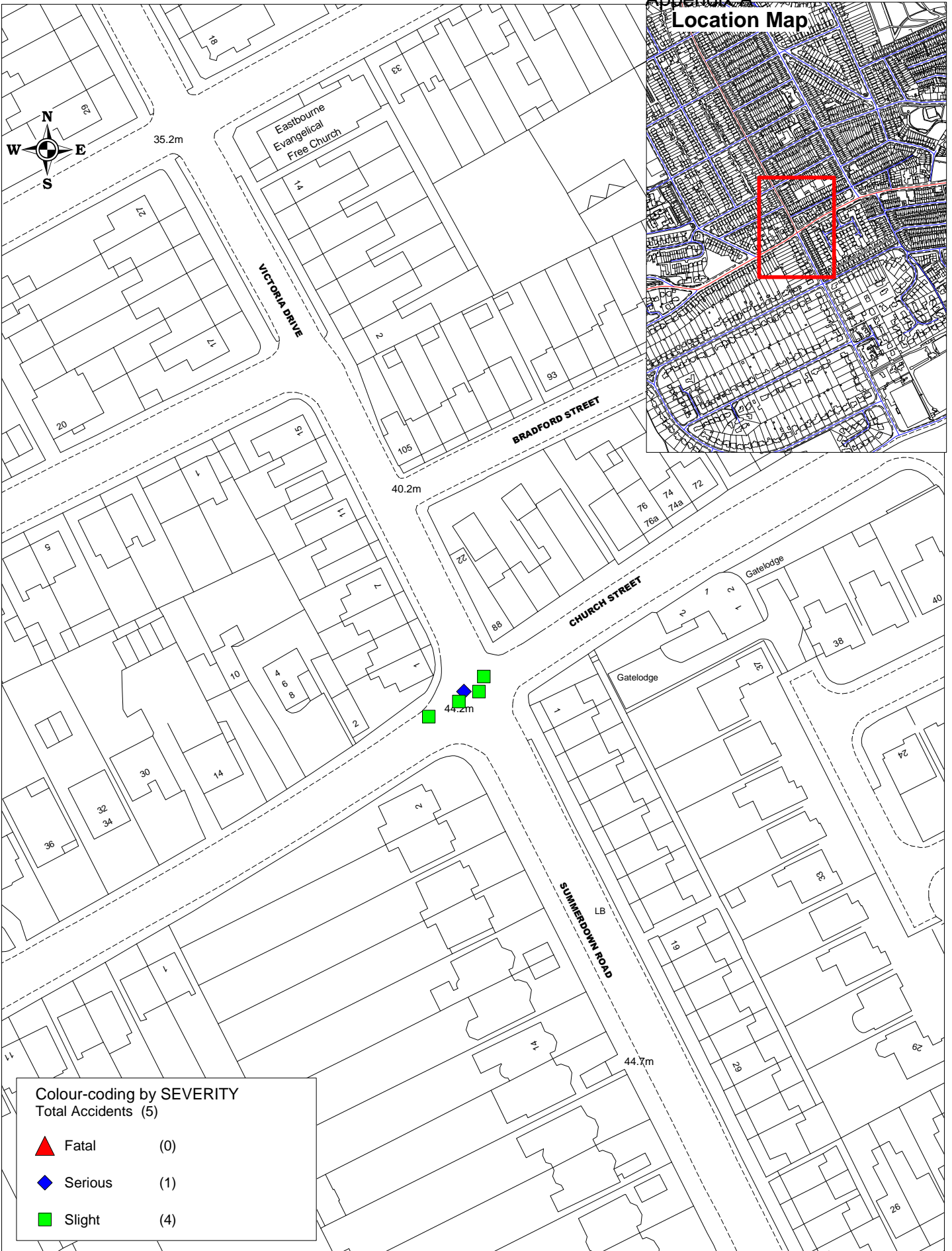
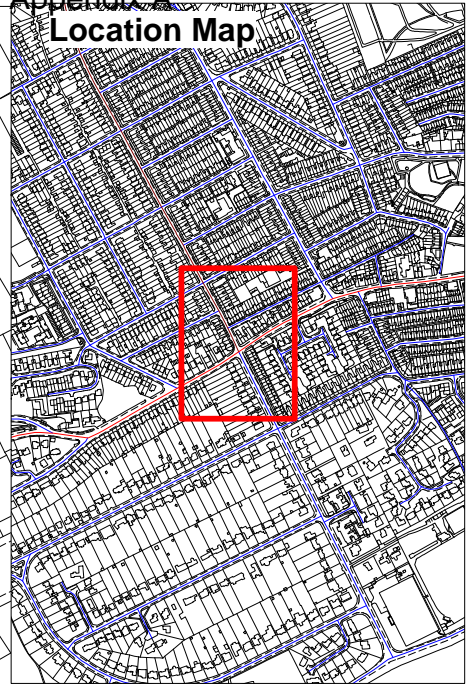
#### LOCAL MEMBERS

Councillor Ungar

#### BACKGROUND DOCUMENTS

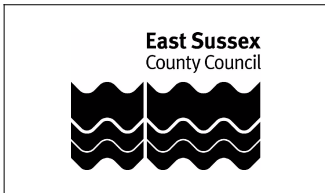
None

Appendix A  
Location Map



**Colour-coding by SEVERITY**  
Total Accidents (5)

- ▲ Fatal (0)
- ◆ Serious (1)
- Slight (4)



Victoria Drive, East Dean Road,  
Summerdown Road, Church Street

**Crashes between dates**  
01/03/2016 and 28/02/2019

SCALE	1 : 1000
DATE	24/04/2019
DRAWING NO.	1
DRAWN BY	VCB
ORIGINAL SIZE	

©Crown copyright. All rights reserved.  
East Sussex County Council.  
Licence No. 100019601. 2019

This page is intentionally left blank



<b>Report to:</b>	<b>Lead Cabinet Member for Communities and Safety</b>
<b>Date of meeting:</b>	<b>30 May 2019</b>
<b>By:</b>	<b>Director of Communities, Economy and Transport</b>
<b>Title:</b>	<b>Petition for traffic calming measures – Gore Park Road, Eastbourne</b>
<b>Purpose:</b>	<b>To consider the need for traffic calming measures and to carry out a safety survey of the condition of the road and footway in Gore Park Road, Eastbourne</b>

---

**RECOMMENDATIONS:** The Lead Member is recommended to advise petitioners that:

- (1) A traffic calming scheme for Gore Park Road is not a priority for the County Council at the present time; and**
  - (2) A safety survey of the condition of the footway and carriageway in Gore Park Road has been carried out.**
- 

## **1 Background Information**

1.1. At the County Council meeting on 5 February 2019, Councillor Ungar presented a petition to the Chairman from a group of residents from the Gore Park Road area of Eastbourne. They believe that the traffic situation around Gore Park Road requires urgent review with a view to:

- Implement a traffic calming scheme to reduce vehicle speeds and prevent vehicles from driving on the footway
- Carry out a survey of the condition of the road and footway

1.2. A copy of the petition is available in the Members' Room. Standing Orders provide that where the Chairman considers it appropriate petitions are considered by the relevant Committee. The Chairman has referred this petition to the Lead Member for Communities and Safety.

## **2. Supporting Information**

2.1. Gore Park Road is covered by a 30mph speed limit as indicated by the system of street lights in the road.

2.2. Gore Park Road is a residential road with very limited off-street parking. Parking is restricted to one side of the road, with double yellow lines running along the whole of the northern side of the road. This is shown at Appendix 1.

2.3. The crash data supplied by Sussex Police for the period 1 January 2009 to 28 February 2019 shows that there have been no crashes resulting in personal injury in Gore Park Road.

2.4. Concerns have previously been received by the County Council regarding vehicle speeds. Gore Park Road has been assessed for a possible traffic calming scheme, and a one-way system.

2.5. The County Council has a limited amount of funding to develop local transport improvements and we need to ensure that we target our resources to those schemes which will be of greatest benefit to our local communities. To help us prioritise the numerous requests received for improvements, we developed a process to determine which schemes should be

funded through our Integrated Transport Programme. The requests for traffic calming measures and a one-way system have been assessed to determine if they might be a priority for further consideration. The proposals did not meet the benchmark score to enable them to be taken forward.

2.6. In relation to concerns about dangerous or antisocial driving, or vehicles travelling in excess of the speed limit, residents are advised to contact Sussex Police via their Operation Crackdown scheme. Residents are also advised to consider using the Community Speed Watch programme.

2.7. Regarding the current condition of Gore Park Road, the local Highway Steward carried out an inspection on 21 February 2019. The inspection identified four areas of pavement posing a trip hazard to users, two potholes and also two drain covers that need to be reset. These repairs were carried out within 28 days. Gore Park Road is inspected on a six-monthly basis as part of routine safety inspection. Highways Stewards also carry out additional inspections when reports are received from members of the public.

### **3. Conclusion and Reasons for Recommendations**

3.1 It is recommended that the Lead Member for Communities and Safety agrees that the installation of traffic calming measures is not presently a priority for funding from the County Council's budget. However, appropriate improvements could be considered should an alternative source of income become available or if an application through Community Match was successful. All repairs identified within the highway steward inspection have been completed as per 2.7 above.

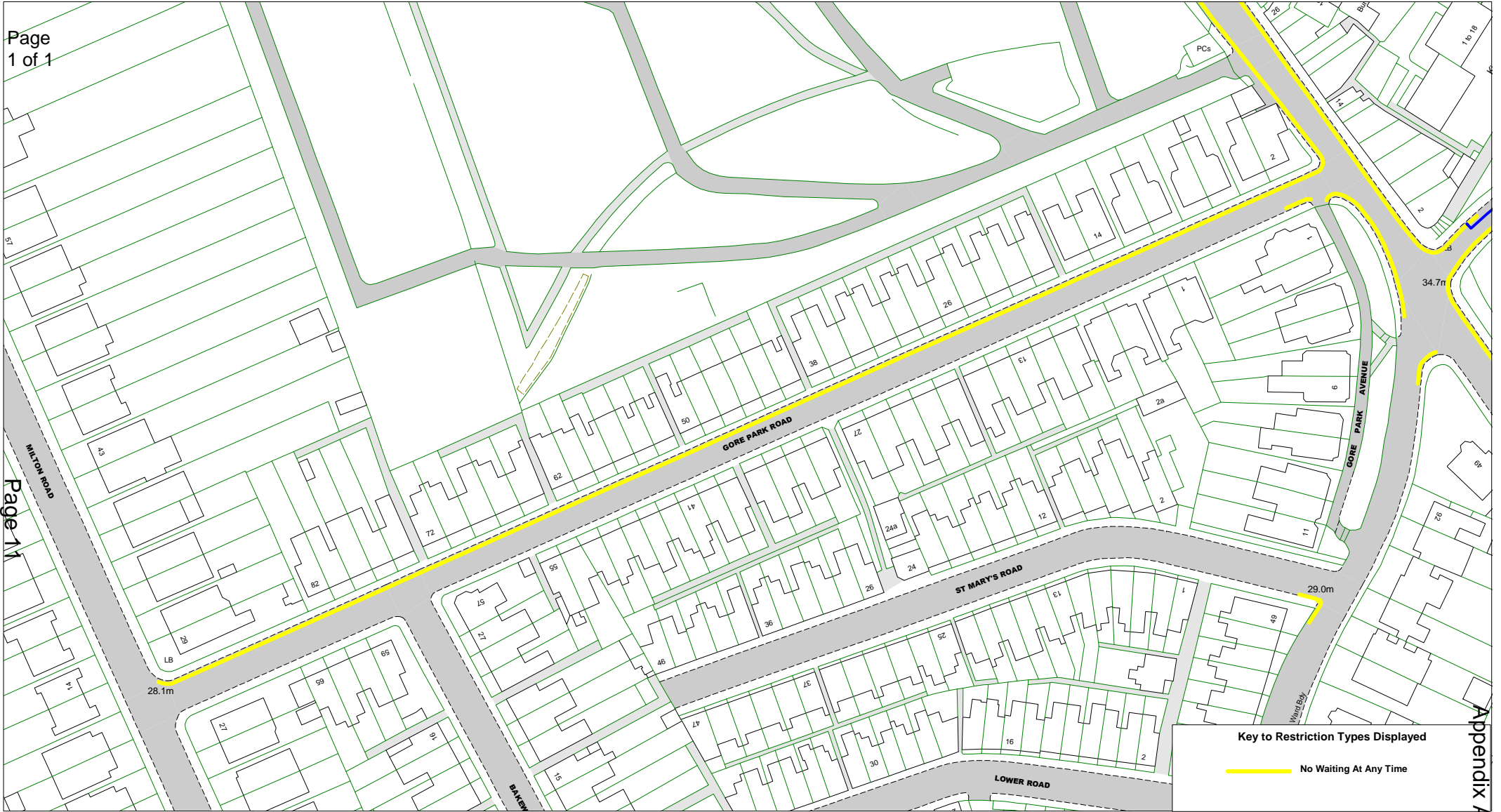
3.2 In order to determine what measures could be suitable in Gore Park Road prior to a Community Match application, it is suggested that the residents contact the Borough Council to ascertain whether they would be interested in supporting a scheme to try and influence traffic conditions in this road. They would then need to commission a Feasibility Study at a cost of £500. This will help to identify possible improvements for further discussions and provide the group of residents and Borough Council with an estimate of what they might cost to assist in their budget considerations.

RUPERT CLUBB  
Director of Communities, Economy and Transport

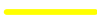
Contact Officer: Victoria Bartholomew  
Tel. No. 01424 724284  
Email: [Victoria.Bartholomew@eastsussex.gov.uk](mailto:Victoria.Bartholomew@eastsussex.gov.uk)

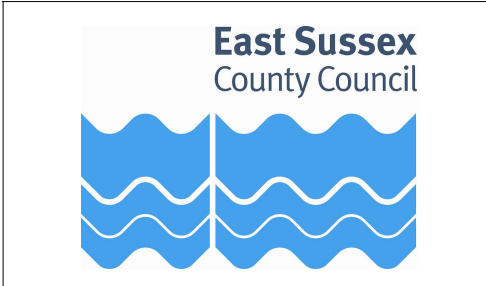
LOCAL MEMBERS  
Councillor Ungar


BACKGROUND DOCUMENTS  
None



**Key to Restriction Types Displayed**

 No Waiting At Any Time




  
**Gore Park Road, Eastbourne**

SCALE	1 : 1250
DATE	03/04/2019
DRAWING No.	1
DRAWN BY	VCB
<small>© Crown copyright. All rights reserved East Sussex County Council Licence No. 100019601 2019</small>	

This page is intentionally left blank